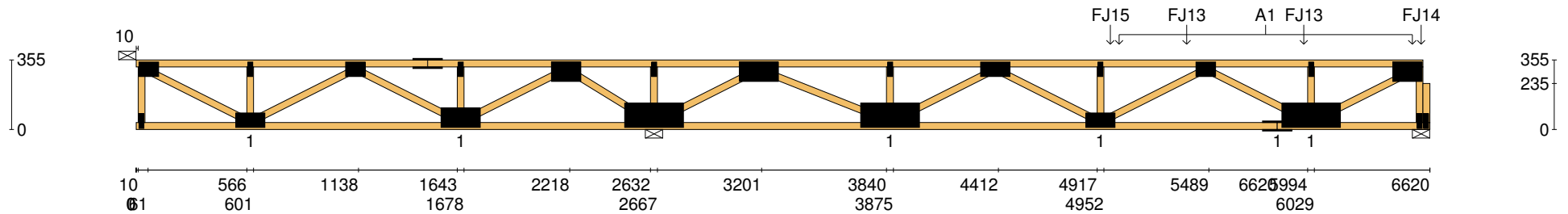





Client: <b>D'ANDREA</b>	<b>Trusstech SA Pty Ltd</b> 16 High St., Dry Creek, SA 5094	Job No: <b>TT02366</b>
Site: <b>50-52 WINDSOR ST</b> <b>MAGILL SA 5072 AUS</b>		Weight: <b>40.36 kg</b>
Ref: <b>DWLG 7</b>	Joist Name: FJ1 Type: SJ 355 Joists: FJ1	Total Weight: <b>40.36 kg</b>
		Laminations: <b>1</b>



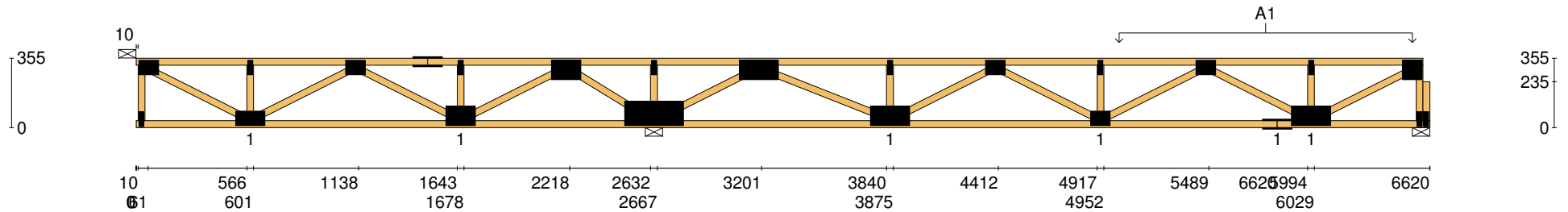
**User Def. Load**    A1  
53.00 kg/m<sup>2</sup>  
WET AREA

<b>Applied Load</b>	FJ15	FJ13	FJ13	FJ14
<b>DL (kN)</b>	-0.09	-0.09	-0.09	-0.09
<b>LL (kN)</b>	-0.22	-0.22	-0.22	-0.22
<b>WL Up (kN)</b>				
<b>WL Dn (kN)</b>				

Span: <b>6620</b>	Floor Material: <b>Particle (15.4 kg/m<sup>2</sup>)</b>	Application: <b>General Areas</b>	All dimensions in millimetres. This drawing should be read in conjunction with Multinail Technical sheets. Wall plates must be placed at supports only.	<b>016020</b> (TN-016-020)
Overhang: <b>0/0</b>	Floor Covering: <b>Std Carpet + Underlay (8 kg/m<sup>2</sup>)</b>	Live Load: <b>1.5 kPa</b>		Ver: <b>Floor 1.9.4</b>
Spacing: <b>600</b>	Ceiling Material: <b>Plaster 10mm Supa Span (8.2 kg/m<sup>2</sup>)</b>	Point Load: <b>1.8 kN</b>		Date: <b>7/12/2018</b>
Quantity: <b>1</b>	Ceiling Fixing: <b>Metal direct @ 600c</b>	Design: <b>AS 1720.1-2010</b>		Page: <b>2 of 24</b>




Client: <b>D'ANDREA</b>	<b>Trusstech SA Pty Ltd</b> 16 High St., Dry Creek, SA 5094	Job No: <b>TT02366</b>
Site: <b>50-52 WINDSOR ST</b> <b>MAGILL SA 5072 AUS</b>		Weight: <b>39.43 kg</b>
Ref: <b>DWLG 7</b>	Joist Name: FJ2 Type: SJ 355 Joists: FJ2, FJ3, FJ4, FJ5	Total Weight: <b>157.73 kg</b>
		Laminations: <b>1</b>

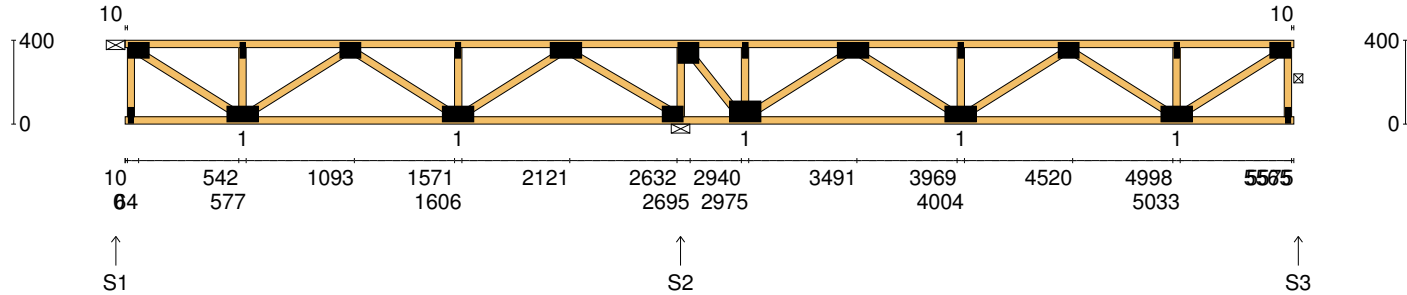


<b>User Def. Load</b>	A1 53.00 kg/m <sup>2</sup> WET AREA
-----------------------	---

<b>Applied Load</b>	
DL (kN)	
LL (kN)	
WL Up (kN)	
WL Dn (kN)	

Span: <b>6620</b>	Floor Material: <b>Particle (15.4 kg/m<sup>2</sup>)</b>	Application: <b>General Areas</b>	All dimensions in millimetres. This drawing should be read in conjunction with Multinail Technical sheets. Wall plates must be placed at supports only.	<b>016020</b> (TN-016-020)
Overhang: <b>0/0</b>	Floor Covering: <b>Std Carpet + Underlay (8 kg/m<sup>2</sup>)</b>	Live Load: <b>1.5 kPa</b>		Ver: <b>Floor 1.9.4</b>
Spacing: <b>600</b>	Ceiling Material: <b>Plaster 10mm Supa Span (8.2 kg/m<sup>2</sup>)</b>	Point Load: <b>1.8 kN</b>		Date: <b>7/12/2018</b>
Quantity: <b>4</b>	Ceiling Fixing: <b>Metal direct @ 600c</b>	Design: <b>AS 1720.1-2010</b>		Page: <b>4 of 24</b>

Client: <b>D'ANDREA</b>	<b>Trusstech SA Pty Ltd</b> 16 High St., Dry Creek, SA 5094	Job No: <b>TT02366</b>
Site: <b>50-52 WINDSOR ST MAGILL SA 5072 AUS</b>		Weight: <b>33.86 kg</b>
Ref: <b>DWLG 7</b>	Joist Name: FJ3 Type: SJ 400 Joists: FJ6, FJ7	Total Weight: <b>67.72 kg</b>
		Laminations: <b>1</b>



#### TIMBER / PLATES


Member	Size	Plating	Restraint
BC1	90x35-MGP10 H0 ADS	JD5	600
TC1	90x35-MGP10 H0 ADS	JD5	300
LEW1	90x35-MGP10 H0 ADS	JD5	
W1	90x35-MGP10 H0 ADS	JD5	
W2	90x35-MGP10 H0 ADS	JD5	
W3	90x35-MGP10 H0 ADS	JD5	
W4	90x35-MGP10 H0 ADS	JD5	
W5	90x35-MGP10 H0 ADS	JD5	
W6	90x35-MGP10 H0 ADS	JD5	
W7	90x35-MGP10 H0 ADS	JD5	
W8	90x35-MGP10 H0 ADS	JD5	
W9	90x35-MGP10 H0 ADS	JD5	
W10	90x35-MGP10 H0 ADS	JD5	

- 8 more members were not shown -

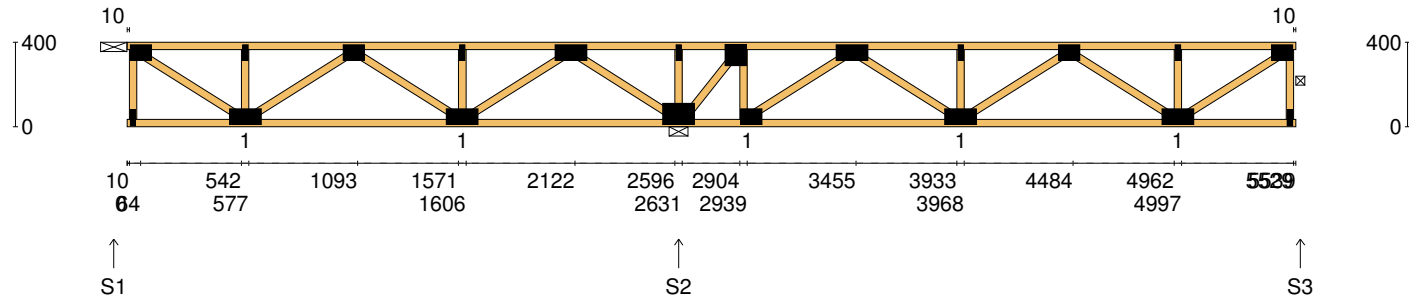
#### Vertical Reactions at Supports

	S1	S2	S3
1.35DL (kN)	0.33	1.12	0.38
1.2DL + 1.5LL (kN)	1.61	5.57	1.89

Joint	Nail Plate	Joint	Nail Plate
T1	75x100-MN	B5	75x150-MN
BL1	25x75-MN	T9	25x75-MN
B1	75x150-MN	T10	75x100-MN
T2	25x75-MN	B6	75x150-MN
T3	75x100-MN	T11	25x75-MN
B2	75x150-MN	BR1	25x75-MN
T4	25x75-MN	T12	75x100-MN
T5	75x150-MN		
B3	75x100-MN		
T6	100x100-MN		
B4	100x150-MN		
T7	25x75-MN		
T8	75x150-MN		

Span: <b>5575</b>	Floor Material: <b>Particle (15.4 kg/m²)</b>	Application: <b>General Areas</b>	All dimensions in millimetres. This drawing should be read in conjunction with Multinail Technical sheets. Wall plates must be placed at supports only.	<b>016020</b> (TN-016-020)
Overhang: <b>0/0</b>	Floor Covering: <b>Std Carpet + Underlay (8 kg/m²)</b>	Live Load: <b>1.5 kPa</b>		Ver: <b>Floor 1.9.4</b>
Spacing: <b>600</b>	Ceiling Material: <b>Plaster 10mm Supa Span (8.2 kg/m²)</b>	Point Load: <b>1.8 kN</b>		Date: <b>7/12/2018</b>
Quantity: <b>2</b>	Ceiling Fixing: <b>Metal direct @ 600c</b>	Design: <b>AS 1720.1-2010</b>		Page: <b>5 of 24</b>

Client: <b>D'ANDREA</b>	<b>Trusstech SA Pty Ltd</b> 16 High St., Dry Creek, SA 5094  Joist Name: FJ4    Type: SJ 400 Joists: FJ8, FJ9, FJ10	Job No: <b>TT02366</b>
Site: <b>50-52 WINDSOR ST MAGILL SA 5072 AUS</b>		Weight: <b>33.69 kg</b>
Ref: <b>DWL G 7</b>		Total Weight: <b>101.08 kg</b>
		Laminations: <b>1</b>



#### TIMBER / PLATES


Member	Size	Plating	Restraint
BC1	90x35-MGP10 H0 ADS	JD5	600
TC1	90x35-MGP10 H0 ADS	JD5	300
LEW1	90x35-MGP10 H0 ADS	JD5	
W1	90x35-MGP10 H0 ADS	JD5	
W2	90x35-MGP10 H0 ADS	JD5	
W3	90x35-MGP10 H0 ADS	JD5	
W4	90x35-MGP10 H0 ADS	JD5	
W5	90x35-MGP10 H0 ADS	JD5	
W6	90x35-MGP10 H0 ADS	JD5	
W7	90x35-MGP10 H0 ADS	JD5	
W8	90x35-MGP10 H0 ADS	JD5	
W9	90x35-MGP10 H0 ADS	JD5	
W10	90x35-MGP10 H0 ADS	JD5	

- 8 more members were not shown -

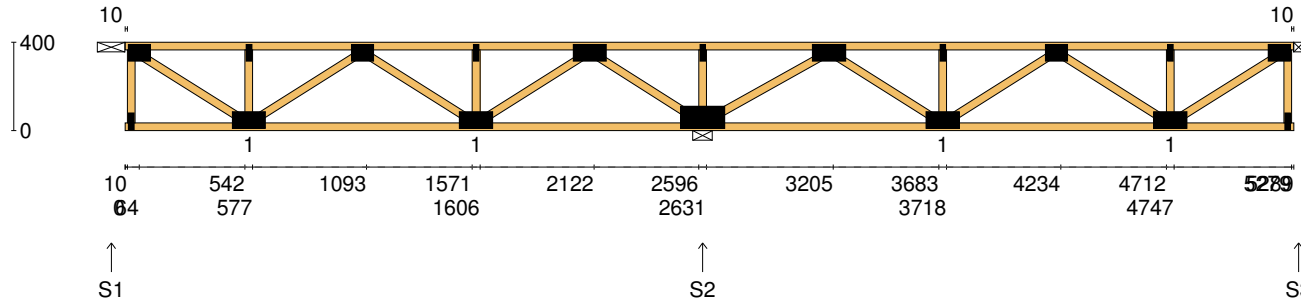
#### Vertical Reactions at Supports

	S1	S2	S3
1.35DL (kN)	0.32	1.11	0.38
1.2DL + 1.5LL (kN)	1.58	5.55	1.89

Joint	Nail Plate	Joint	Nail Plate
T1	75x100-MN	B5	75x150-MN
BL1	25x75-MN	T9	25x75-MN
B1	75x150-MN	T10	75x100-MN
T2	25x75-MN	B6	75x150-MN
T3	75x100-MN	T11	25x75-MN
B2	75x150-MN	BR1	25x75-MN
T4	25x75-MN	T12	75x100-MN
T5	75x150-MN		
B3	100x150-MN		
T6	25x75-MN		
T7	100x100-MN		
B4	75x100-MN		
T8	75x150-MN		

Span: <b>5539</b>	Floor Material: <b>Particle (15.4 kg/m²)</b>	Application: <b>General Areas</b>	All dimensions in millimetres. This drawing should be read in conjunction with Multinail Technical sheets. Wall plates must be placed at supports only.	<b>016020</b> (TN-016-020)
Overhang: <b>0/0</b>	Floor Covering: <b>Std Carpet + Underlay (8 kg/m²)</b>	Live Load: <b>1.5 kPa</b>		Ver: <b>Floor 1.9.4</b>
Spacing: <b>600</b>	Ceiling Material: <b>Plaster 10mm Supa Span (8.2 kg/m²)</b>	Point Load: <b>1.8 kN</b>		Date: <b>7/12/2018</b>
Quantity: <b>3</b>	Ceiling Fixing: <b>Metal direct @ 600c</b>	Design: <b>AS 1720.1-2010</b>		Page: <b>6 of 24</b>

Client: <b>D'ANDREA</b>	<b>Trusstech SA Pty Ltd</b> 16 High St., Dry Creek, SA 5094  Joist Name: FJ5 Type: SJ 400 Joists: FJ11	Job No: <b>TT02366</b>
Site: <b>50-52 WINDSOR ST MAGILL SA 5072 AUS</b>		Weight: <b>31.61 kg</b>
Ref: <b>DWLG 7</b>		Total Weight: <b>31.61 kg</b>
		Laminations: <b>1</b>



#### TIMBER / PLATES


Member	Size	Plating	Restraint
BC1	90x35-MGP10 H0 ADS	JD5	600
TC1	90x35-MGP10 H0 ADS	JD5	300
LEW1	90x35-MGP10 H0 ADS	JD5	
W1	90x35-MGP10 H0 ADS	JD5	
W2	90x35-MGP10 H0 ADS	JD5	
W3	90x35-MGP10 H0 ADS	JD5	
W4	90x35-MGP10 H0 ADS	JD5	
W5	90x35-MGP10 H0 ADS	JD5	
W6	90x35-MGP10 H0 ADS	JD5	
W7	90x35-MGP10 H0 ADS	JD5	
W8	90x35-MGP10 H0 ADS	JD5	
W9	90x35-MGP10 H0 ADS	JD5	
W10	90x35-MGP10 H0 ADS	JD5	

- 6 more members were not shown -

#### Vertical Reactions at Supports

	S1	S2	S3
1.35DL (kN)	0.33	1.05	0.35
1.2DL + 1.5LL (kN)	1.64	5.26	1.70

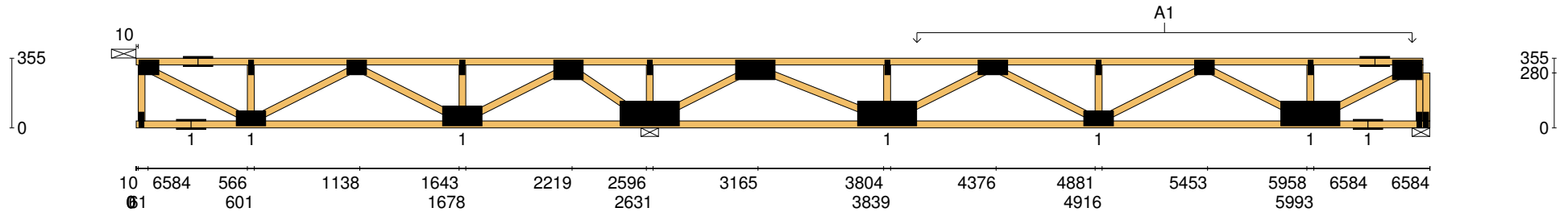
Joint	Nail Plate	Joint	Nail Plate
T1	75x100-MN	T9	75x100-MN
BL1	25x75-MN	B5	75x150-MN
B1	75x150-MN	T10	25x75-MN
T2	25x75-MN	BR1	25x75-MN
T3	75x100-MN	T11	75x100-MN
B2	75x150-MN		
T4	25x75-MN		
T5	75x150-MN		
B3	100x200-MN		
T6	25x75-MN		
T7	75x150-MN		
B4	75x150-MN		
T8	25x75-MN		

Span: <b>5289</b>	Floor Material: <b>Particle (15.4 kg/m²)</b>	Application: <b>General Areas</b>	All dimensions in millimetres. This drawing should be read in conjunction with Multinail Technical sheets. Wall plates must be placed at supports only.	<b>016020</b> (TN-016-020)
Overhang: <b>0/0</b>	Floor Covering: <b>Std Carpet + Underlay (8 kg/m²)</b>	Live Load: <b>1.5 kPa</b>		Ver: <b>Floor 1.9.4</b>
Spacing: <b>600</b>	Ceiling Material: <b>Plaster 10mm Supa Span (8.2 kg/m²)</b>	Point Load: <b>1.8 kN</b>		Date: <b>7/12/2018</b>
Quantity: <b>1</b>	Ceiling Fixing: <b>Metal direct @ 600c</b>	Design: <b>AS 1720.1-2010</b>		Page: <b>7 of 24</b>



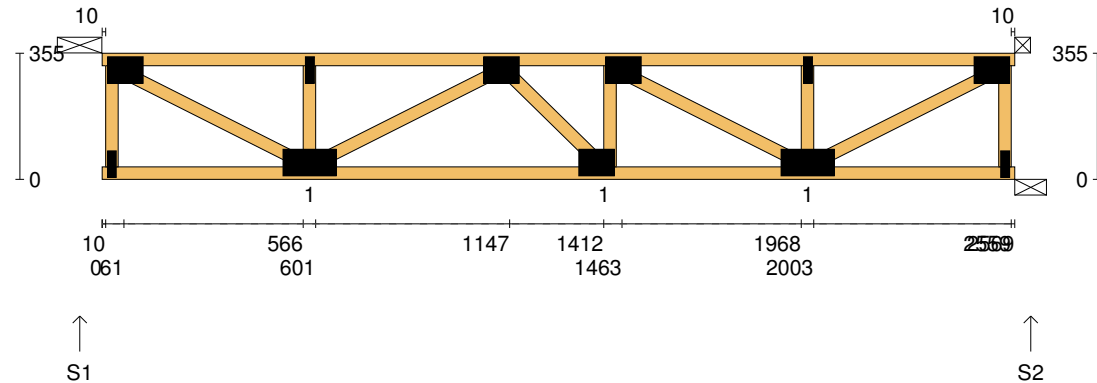


Client: <b>D'ANDREA</b>	<b>Trusstech SA Pty Ltd</b> 16 High St., Dry Creek, SA 5094	Job No: <b>TT02366</b>
Site: <b>50-52 WINDSOR ST</b> <b>MAGILL SA 5072 AUS</b>		Weight: <b>42.73 kg</b>
Ref: <b>DWLG 7</b>	Joist Name: FJ6 Type: SJ 355 Joists: FJ12	Total Weight: <b>42.73 kg</b>
		Laminations: <b>1</b>



<b>User Def. Load</b>		A1 176.67 kg/m² WET AREA			
<b>Applied Load</b> DL (kN) LL (kN) WL Up (kN) WL Dn (kN)					
Span:	6584	Floor Material: Particle (15.4 kg/m²)	Application: General Areas	All dimensions in millimetres. This drawing should be read in conjunction with Multinail Technical sheets. Wall plates must be placed at supports only.	016020 (TN-016-020)
Overhang:	0/0	Floor Covering: Std Carpet + Underlay (8 kg/m²)	Live Load: 1.5 kPa		Ver: Floor 1.9.4
Spacing:	600	Ceiling Material: Plaster 10mm Supa Span (8.2 kg/m²)	Point Load: 1.8 kN		Date: 7/12/2018
Quantity:	1	Ceiling Fixing: Metal direct @ 600c	Design: AS 1720.1-2010		Page: 9 of 24

Client: <b>D'ANDREA</b>	<b>Trusstech SA Pty Ltd</b> 16 High St., Dry Creek, SA 5094  Joist Name: FJ7    Type: SJ 355 Joists: FJ13, FJ14, FJ15	Job No: <b>TT02366</b>
Site: <b>50-52 WINDSOR ST MAGILL SA 5072 AUS</b>		Weight: <b>15.72 kg</b>
Ref: <b>DWLG 7</b>		Total Weight: <b>47.15 kg</b>
		Laminations: <b>1</b>



#### TIMBER / PLATES


Member	Size	Plating	Restraint
BC1	90x35-MGP10 H0 ADS	JD5	600
TC1	90x35-MGP10 H0 ADS	JD5	300
LEW1	90x35-MGP10 H0 ADS	JD5	
W1	90x35-MGP10 H0 ADS	JD5	
W2	90x35-MGP10 H0 ADS	JD5	
W3	90x35-MGP10 H0 ADS	JD5	
W4	90x35-MGP10 H0 ADS	JD5	
W5	90x35-MGP10 H0 ADS	JD5	
W6	90x35-MGP10 H0 ADS	JD5	
W7	90x35-MGP10 H0 ADS	JD5	
W8	90x35-MGP10 H0 ADS	JD5	
REW1	90x35-MGP10 H0 ADS	JD5	

#### Vertical Reactions at Supports

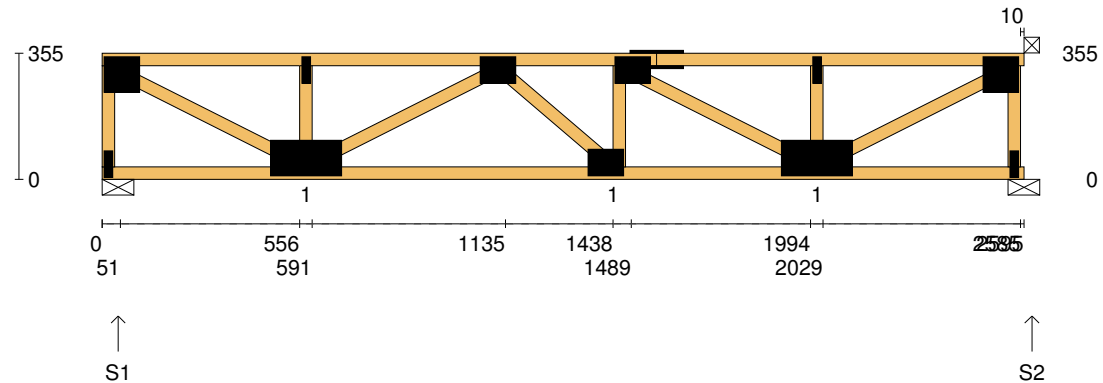
	S1	S2
1.35DL (kN)	0.42	0.42
1.2DL + 1.5LL (kN)	2.07	2.07

#### Joint Nail Plate

T1	75x100-MN
BL1	25x75-MN
B1	75x150-MN
T2	25x75-MN
T3	75x100-MN
B2	75x100-MN
T4	75x100-MN
B3	75x150-MN
T5	25x75-MN
BR1	25x75-MN
T6	75x100-MN

Span: <b>2569</b>	Floor Material: <b>Particle (15.4 kg/m²)</b>	Application: <b>General Areas</b>	All dimensions in millimetres. This drawing should be read in conjunction with Multinail Technical sheets. Wall plates must be placed at supports only.	<b>016020</b> (TN-016-020)
Overhang: <b>0/0</b>	Floor Covering: <b>Std Carpet + Underlay (8 kg/m²)</b>	Live Load: <b>1.5 kPa</b>		Ver: <b>Floor 1.9.4</b>
Spacing: <b>600</b>	Ceiling Material: <b>Plaster 10mm Supa Span (8.2 kg/m²)</b>	Point Load: <b>1.8 kN</b>		Date: <b>7/12/2018</b>
Quantity: <b>3</b>	Ceiling Fixing: <b>Metal direct @ 600c</b>	Design: <b>AS 1720.1-2010</b>		Page: <b>10 of 24</b>

Client: <b>D'ANDREA</b>	<b>Trusstech SA Pty Ltd</b> 16 High St., Dry Creek, SA 5094  Joist Name: FJ8 Type: SJ 355 Joists: FJ17	Job No: <b>TT02366</b>
Site: <b>50-52 WINDSOR ST MAGILL SA 5072 AUS</b>		Weight: <b>16.39 kg</b>
Ref: <b>DWLG 7</b>		Total Weight: <b>16.39 kg</b>
		Laminations: <b>1</b>



#### TIMBER / PLATES


Member	Size	Plating	Restraint
BC1	90x35-MGP10 H0 ADS	JD5	600
LEW1	90x35-MGP10 H0 ADS	JD5	
TC1	90x35-MGP10 H0 ADS	JD5	300
W1	90x35-MGP10 H0 ADS	JD5	
W2	90x35-MGP10 H0 ADS	JD5	
W3	90x35-MGP10 H0 ADS	JD5	
W4	90x35-MGP10 H0 ADS	JD5	
W5	90x35-MGP10 H0 ADS	JD5	
W6	90x35-MGP10 H0 ADS	JD5	
TC2	90x35-MGP10 H0 ADS	JD5	300
W7	90x35-MGP10 H0 ADS	JD5	
W8	90x35-MGP10 H0 ADS	JD5	
REW1	90x35-MGP10 H0 ADS	JD5	

#### Vertical Reactions at Supports

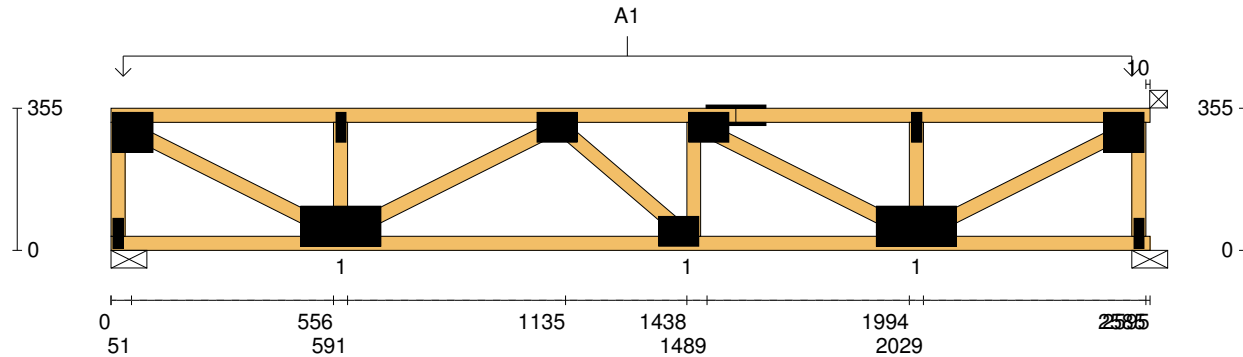
	S1	S2
1.35DL (kN)	0.84	0.84
1.2DL + 1.5LL (kN)	2.73	2.73


#### Joint Nail Plate

T1	100x100-MN
BL1	25x75-MN
B1	100x200-MN
T2	25x75-MN
T3	75x100-MN
B2	75x100-MN
T4	75x100-MN
T5	75x150-MN
B3	100x200-MN
T6	25x75-MN
BR1	25x75-MN
T7	100x100-MN

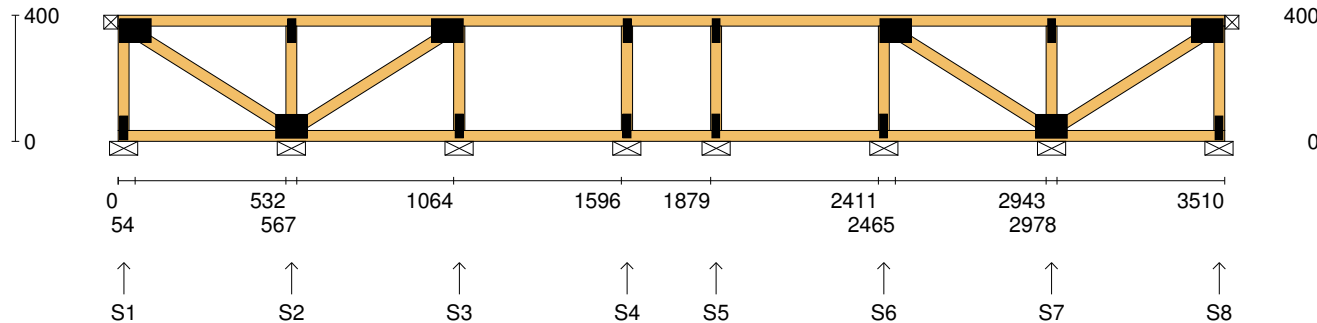
Span: <b>2595</b>	Floor Material: <b>Particle (15.4 kg/m<sup>2</sup>)</b>	Application: <b>General Areas</b>	All dimensions in millimetres. This drawing should be read in conjunction with Multinail Technical sheets. Wall plates must be placed at supports only.	<b>016020</b> (TN-016-020)
Overhang: <b>0/0</b>	Floor Covering: <b>Std Carpet + Underlay (8 kg/m<sup>2</sup>)</b>	Live Load: <b>1.5 kPa</b>		Ver: <b>Floor 1.9.4</b>
Spacing: <b>600</b>	Ceiling Material: <b>Plaster 10mm Supa Span (8.2 kg/m<sup>2</sup>)</b>	Point Load: <b>1.8 kN</b>		Date: <b>7/12/2018</b>
Quantity: <b>1</b>	Ceiling Fixing: <b>Metal direct @ 600c</b>	Design: <b>AS 1720.1-2010</b>		Page: <b>11 of 24</b>

Client: <b>D'ANDREA</b>	<b>Trusstech SA Pty Ltd</b> 16 High St., Dry Creek, SA 5094	Job No: <b>TT02366</b>
Site: <b>50-52 WINDSOR ST MAGILL SA 5072 AUS</b>		Weight: <b>16.39 kg</b>
Ref: <b>DWLG 7</b>	Joist Name: FJ8 Type: SJ 355 Joists: FJ17	Total Weight: <b>16.39 kg</b>
		Laminations: <b>1</b>



<b>User Def. Load</b>		A1 176.67 kg/m <sup>2</sup> WET AREA
<b>Applied Load</b>		
DL	(kN)	
LL	(kN)	
WL Up	(kN)	
WL Dn	(kN)	
Span:	2595	Floor Material: <b>Particle (15.4 kg/m<sup>2</sup>)</b>
Overhang:	0/0	Floor Covering: <b>Std Carpet + Underlay (8 kg/m<sup>2</sup>)</b>
Spacing:	600	Ceiling Material: <b>Plaster 10mm Supa Span (8.2 kg/m<sup>2</sup>)</b>
Quantity:	1	Ceiling Fixing: <b>Metal direct @ 600c</b>
Application: <b>General Areas</b>		All dimensions in millimetres. This drawing should be read in conjunction with Multinail Technical sheets. Wall plates must be placed at supports only.
Live Load: <b>1.5 kPa</b>		
Point Load: <b>1.8 kN</b>		
Design: <b>AS 1720.1-2010</b>		
		
		<b>016020</b> (TN-016-020)
		Ver: <b>Floor 1.9.4</b>
		Date: <b>7/12/2018</b>
		Page: <b>12 of 24</b>

Client: <b>D'ANDREA</b>	<b>Trusstech SA Pty Ltd</b> 16 High St., Dry Creek, SA 5094	Job No: <b>TT02366</b>
Site: <b>50-52 WINDSOR ST MAGILL SA 5072 AUS</b>		Weight: <b>19.95 kg</b>
Ref: <b>DWLG 7</b>	Joist Name: FJ9 Type: SJ 400 Ladder Joists: FJ18	Total Weight: <b>19.95 kg</b>
		Laminations: <b>1</b>



#### TIMBER / PLATES


Member	Size	Plating	Restraint
BC1	90x35-MGP10 H0 ADS	JD5	600
LEW1	90x35-MGP10 H0 ADS	JD5	
TC1	90x35-MGP10 H0 ADS	JD5	300
W1	90x35-MGP10 H0 ADS	JD5	
W2	90x35-MGP10 H0 ADS	JD5	
W3	90x35-MGP10 H0 ADS	JD5	
W4	90x35-MGP10 H0 ADS	JD5	
W5	90x35-MGP10 H0 ADS	JD5	
W6	90x35-MGP10 H0 ADS	JD5	
W7	90x35-MGP10 H0 ADS	JD5	
W8	90x35-MGP10 H0 ADS	JD5	
W9	90x35-MGP10 H0 ADS	JD5	
W10	90x35-MGP10 H0 ADS	JD5	

- 1 more member was not shown -

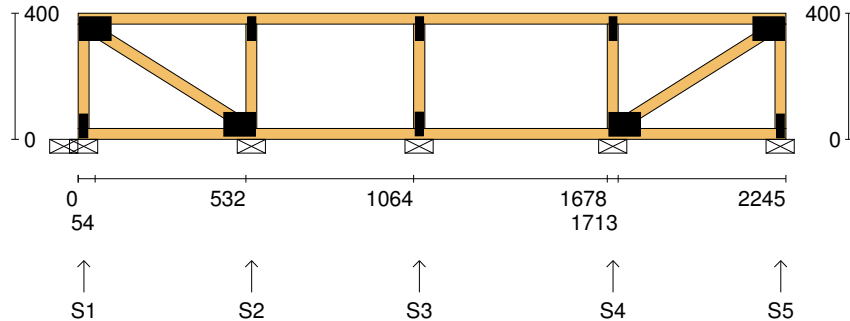
#### Vertical Reactions at Supports

	S1	S2	S3	S4	S5	S6	S7	S8
1.35DL (kN)	0.07	0.22	0.16	0.12	0.12	0.16	0.22	0.07
1.2DL + 1.5LL (kN)	0.30	1.11	0.80	0.64	0.64	0.80	1.11	0.30

Joint	Nail Plate	Joint	Nail Plate
T1	75x100-MN	T7	25x75-MN
BL1	25x75-MN	BR1	25x75-MN
B1	75x100-MN	T8	75x100-MN
T2	25x75-MN		
T3	75x100-MN		
B2	25x75-MN		
T4	25x75-MN		
B3	25x75-MN		
T5	25x75-MN		
B4	25x75-MN		
T6	75x100-MN		
B5	25x75-MN		
B6	75x100-MN		

Span: <b>3510</b>	Floor Material: <b>Particle (15.4 kg/m²)</b>	Application: <b>General Areas</b>	All dimensions in millimetres. This drawing should be read in conjunction with Multinail Technical sheets. Wall plates must be placed at supports only.	<b>016020</b> (TN-016-020)
Overhang: <b>0/0</b>	Floor Covering: <b>Std Carpet + Underlay (8 kg/m²)</b>	Live Load: <b>1.5 kPa</b>		Ver: <b>Floor 1.9.4</b>
Spacing: <b>600</b>	Ceiling Material: <b>Plaster 10mm Supa Span (8.2 kg/m²)</b>	Point Load: <b>1.8 kN</b>		Date: <b>7/12/2018</b>
Quantity: <b>1</b>	Ceiling Fixing: <b>Metal direct @ 600c</b>	Design: <b>AS 1720.1-2010</b>		Page: <b>13 of 24</b>

Client: <b>D'ANDREA</b>	<b>Trusstech SA Pty Ltd</b> 16 High St., Dry Creek, SA 5094  Joist Name: FJ10 Type: SJ 400 Ladder Joists: FJ19	Job No: <b>TT02366</b>
Site: <b>50-52 WINDSOR ST MAGILL SA 5072 AUS</b>		Weight: <b>12.21 kg</b>
Ref: <b>DWLG 7</b>		Total Weight: <b>12.21 kg</b>
		Laminations: <b>1</b>



#### TIMBER / PLATES


Member	Size	Plating	Restraint
BC1	90x35-MGP10 H0 ADS	JD5	600
LEW1	90x35-MGP10 H0 ADS	JD5	
TC1	90x35-MGP10 H0 ADS	JD5	300
W1	90x35-MGP10 H0 ADS	JD5	
W2	90x35-MGP10 H0 ADS	JD5	
W3	90x35-MGP10 H0 ADS	JD5	
W4	90x35-MGP10 H0 ADS	JD5	
W5	90x35-MGP10 H0 ADS	JD5	
REW1	90x35-MGP10 H0 ADS	JD5	

#### Vertical Reactions at Supports

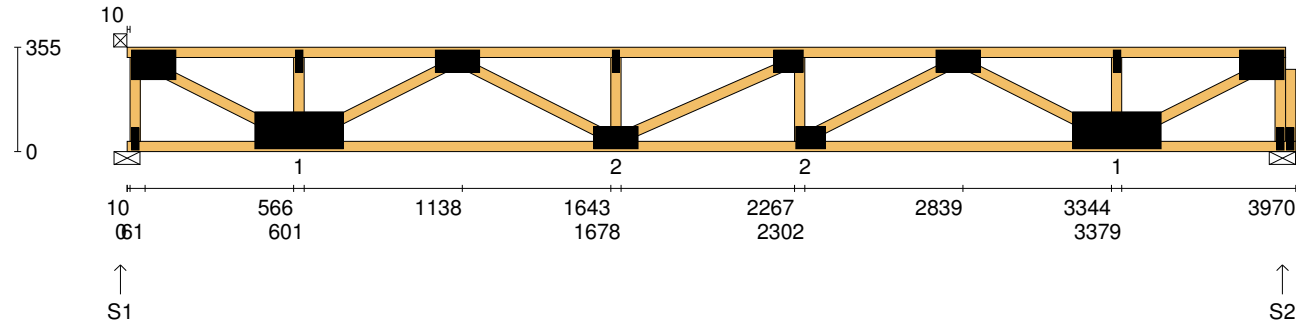
	S1	S2	S3	S4	S5
<b>1.35DL (kN)</b>	0.07	0.19	0.17	0.21	0.07
<b>1.2DL + 1.5LL (kN)</b>	0.33	0.99	0.90	1.08	0.32

#### Joint Nail Plate

T1	75x100-MN
BL1	25x75-MN
B1	75x100-MN
T2	25x75-MN
T3	25x75-MN
B2	25x75-MN
B3	75x100-MN
T4	25x75-MN
BR1	25x75-MN
T5	75x100-MN

Span: <b>2245</b>	Floor Material: <b>Particle (15.4 kg/m²)</b>	Application: <b>General Areas</b>	All dimensions in millimetres. This drawing should be read in conjunction with Multinail Technical sheets. Wall plates must be placed at supports only.	<b>016020</b> (TN-016-020)
Overhang: <b>0/0</b>	Floor Covering: <b>Std Carpet + Underlay (8 kg/m²)</b>	Live Load: <b>1.5 kPa</b>		Ver: <b>Floor 1.9.4</b>
Spacing: <b>600</b>	Ceiling Material: <b>Plaster 10mm Supa Span (8.2 kg/m²)</b>	Point Load: <b>1.8 kN</b>		Date: <b>7/12/2018</b>
Quantity: <b>1</b>	Ceiling Fixing: <b>Metal direct @ 600c</b>	Design: <b>AS 1720.1-2010</b>		Page: <b>14 of 24</b>

Client: <b>D'ANDREA</b>	<b>Trusstech SA Pty Ltd</b> 16 High St., Dry Creek, SA 5094 Joist Name: FJ11 Type: SJ 355 Joists: FJ28, FJ29	Job No: <b>TT02366</b>
Site: <b>50-52 WINDSOR ST MAGILL SA 5072 AUS</b>		Weight: <b>24.78 kg</b>
Ref: <b>DWLG 7</b>		Total Weight: <b>49.56 kg</b>
		Laminations: <b>1</b>



#### TIMBER / PLATES


Member	Size	Plating	Restraint
BC1	90x35-MGP10 H0 ADS	JD5	600
TC1	90x35-MGP10 H0 ADS	JD5	300
LEW1	90x35-MGP10 H0 ADS	JD5	
W1	90x35-MGP10 H0 ADS	JD5	
W2	90x35-MGP10 H0 ADS	JD5	
W3	90x35-MGP10 H0 ADS	JD5	
W4	90x35-MGP10 H0 ADS	JD5	
W5	90x35-MGP10 H0 ADS	JD5	
W6	90x35-MGP10 H0 ADS	JD5	
W7	90x35-MGP10 H0 ADS	JD5	
W8	90x35-MGP10 H0 ADS	JD5	
W9	90x35-MGP10 H0 ADS	JD5	
W10	90x35-MGP10 H0 ADS	JD5	

- 3 more members were not shown -

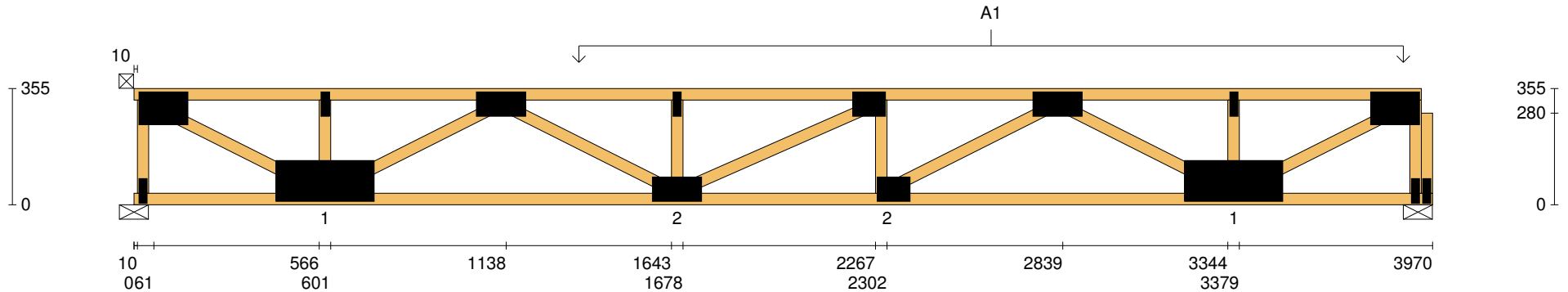
#### Vertical Reactions at Supports

	S1	S2
1.35DL (kN)	0.92	1.20
1.2DL + 1.5LL (kN)	3.62	4.04

Joint	Nail Plate	Joint	Nail Plate
T1	100x150-MN	T8	100x150-MN
BL1	25x75-MN	BR1-1	25x75-MN
B1	125x300-MN		
T2	25x75-MN		
T3	75x150-MN		
B2	75x150-MN		
T4	25x75-MN		
T5	75x100-MN		
B3	75x100-MN		
T6	75x150-MN		
B4	125x300-MN		
T7	25x75-MN		
BR1	25x75-MN		


Span: <b>3970</b>	Floor Material: <b>Particle (15.4 kg/m²)</b>	Application: <b>General Areas</b>	All dimensions in millimetres. This drawing should be read in conjunction with Multinail Technical sheets. Wall plates must be placed at supports only.	<b>016020</b> (TN-016-020)
Overhang: <b>0/0</b>	Floor Covering: <b>Std Carpet + Underlay (8 kg/m²)</b>	Live Load: <b>1.5 kPa</b>		Ver: <b>Floor 1.9.4</b>
Spacing: <b>600</b>	Ceiling Material: <b>Plaster 10mm Supa Span (8.2 kg/m²)</b>	Point Load: <b>1.8 kN</b>		Date: <b>7/12/2018</b>
Quantity: <b>2</b>	Ceiling Fixing: <b>Metal direct @ 600c</b>	Design: <b>AS 1720.1-2010</b>		Page: <b>15 of 24</b>

Client: <b>D'ANDREA</b>	<b>Trusstech SA Pty Ltd</b> 16 High St., Dry Creek, SA 5094	Job No: <b>TT02366</b>
Site: <b>50-52 WINDSOR ST MAGILL SA 5072 AUS</b>		Weight: <b>24.78 kg</b>
Ref: <b>DWLG 7</b>	Joist Name: FJ11 Type: SJ 355 Joists: FJ28, FJ29	Total Weight: <b>49.56 kg</b>
		Laminations: <b>1</b>



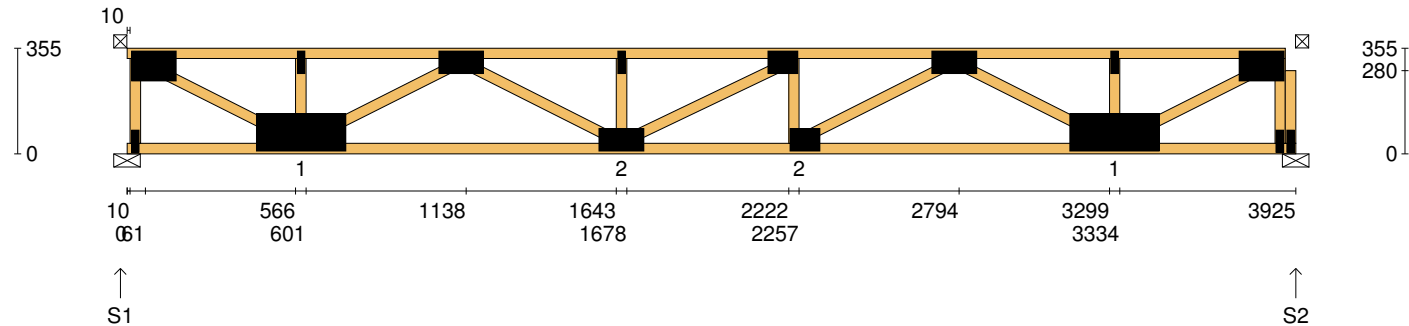
**User Def. Load** A1  
176.67 kg/m<sup>2</sup>  
WET AREA

**Applied Load**  
DL (kN)  
LL (kN)  
WL Up (kN)  
WL Dn (kN)

Span: <b>3970</b>	Floor Material: <b>Particle (15.4 kg/m<sup>2</sup>)</b>	Application: <b>General Areas</b>	All dimensions in millimetres. This drawing should be read in conjunction with Multinail Technical sheets. Wall plates must be placed at supports only.	<b>016020</b> (TN-016-020)
Overhang: <b>0/0</b>	Floor Covering: <b>Std Carpet + Underlay (8 kg/m<sup>2</sup>)</b>	Live Load: <b>1.5 kPa</b>		Ver: <b>Floor 1.9.4</b>
Spacing: <b>600</b>	Ceiling Material: <b>Plaster 10mm Supa Span (8.2 kg/m<sup>2</sup>)</b>	Point Load: <b>1.8 kN</b>		Date: <b>7/12/2018</b>
Quantity: <b>2</b>	Ceiling Fixing: <b>Metal direct @ 600c</b>	Design: <b>AS 1720.1-2010</b>		Page: <b>16 of 24</b>



Client: <b>D'ANDREA</b>	<b>Trusstech SA Pty Ltd</b> 16 High St., Dry Creek, SA 5094	Job No: <b>TT02366</b>
Site: <b>50-52 WINDSOR ST MAGILL SA 5072 AUS</b>		Weight: <b>24.57 kg</b>
Ref: <b>DWLG 7</b>	Joist Name: FJ12 Type: SJ 355 Joists: FJ30, FJ31	Total Weight: <b>49.15 kg</b>
		Laminations: <b>1</b>



#### TIMBER / PLATES


Member	Size	Plating	Restraint
BC1	90x35-MGP10 H0 ADS	JD5	600
TC1	90x35-MGP10 H0 ADS	JD5	300
LEW1	90x35-MGP10 H0 ADS	JD5	
W1	90x35-MGP10 H0 ADS	JD5	
W2	90x35-MGP10 H0 ADS	JD5	
W3	90x35-MGP10 H0 ADS	JD5	
W4	90x35-MGP10 H0 ADS	JD5	
W5	90x35-MGP10 H0 ADS	JD5	
W6	90x35-MGP10 H0 ADS	JD5	
W7	90x35-MGP10 H0 ADS	JD5	
W8	90x35-MGP10 H0 ADS	JD5	
W9	90x35-MGP10 H0 ADS	JD5	
W10	90x35-MGP10 H0 ADS	JD5	

- 3 more members were not shown -

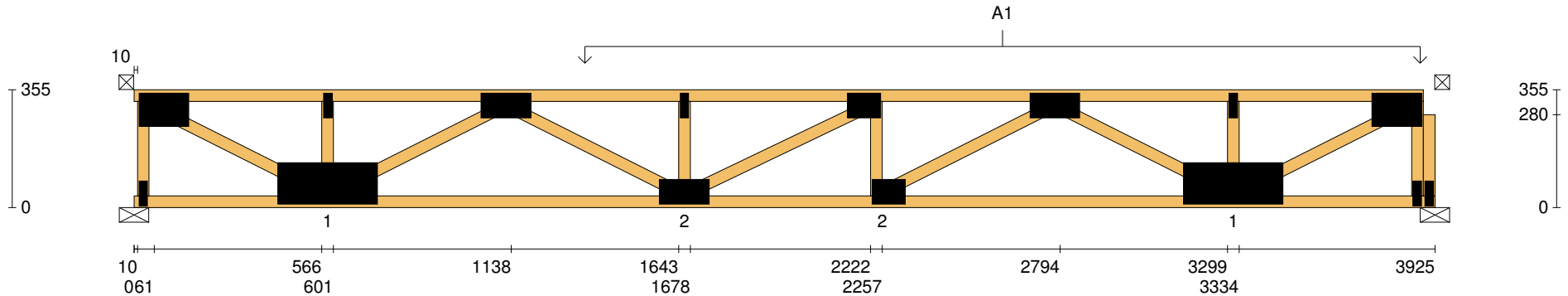
#### Vertical Reactions at Supports

	S1	S2
1.35DL (kN)	0.90	1.19
1.2DL + 1.5LL (kN)	3.57	4.01

Joint	Nail Plate	Joint	Nail Plate
T1	100x150-MN	T8	100x150-MN
BL1	25x75-MN	BR1-1	25x75-MN
B1	125x300-MN		
T2	25x75-MN		
T3	75x150-MN		
B2	75x150-MN		
T4	25x75-MN		
T5	75x100-MN		
B3	75x100-MN		
T6	75x150-MN		
B4	125x300-MN		
T7	25x75-MN		
BR1	25x75-MN		


Span: <b>3925</b>	Floor Material: <b>Particle (15.4 kg/m²)</b>	Application: <b>General Areas</b>	All dimensions in millimetres. This drawing should be read in conjunction with Multinail Technical sheets. Wall plates must be placed at supports only.	<b>016020</b> (TN-016-020)
Overhang: <b>0/0</b>	Floor Covering: <b>Std Carpet + Underlay (8 kg/m²)</b>	Live Load: <b>1.5 kPa</b>		Ver: <b>Floor 1.9.4</b>
Spacing: <b>600</b>	Ceiling Material: <b>Plaster 10mm Supa Span (8.2 kg/m²)</b>	Point Load: <b>1.8 kN</b>		Date: <b>7/12/2018</b>
Quantity: <b>2</b>	Ceiling Fixing: <b>Metal direct @ 600c</b>	Design: <b>AS 1720.1-2010</b>		Page: <b>17 of 24</b>

Client: <b>D'ANDREA</b>	<b>Trusstech SA Pty Ltd</b> 16 High St., Dry Creek, SA 5094	Job No: <b>TT02366</b>
Site: <b>50-52 WINDSOR ST</b> <b>MAGILL SA 5072 AUS</b>		Weight: <b>24.57 kg</b>
Ref: <b>DWLG 7</b>	Joist Name: FJ12 Type: SJ 355 Joists: FJ30, FJ31	Total Weight: <b>49.15 kg</b>
		Laminations: <b>1</b>

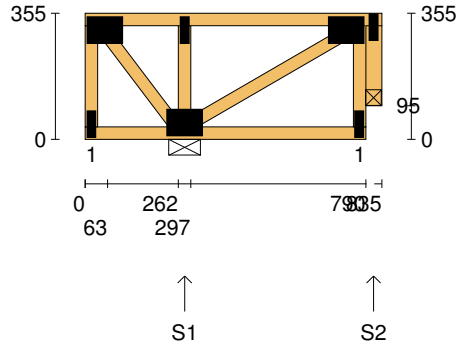


**User Def. Load** A1  
176.67 kg/m<sup>2</sup>  
WET AREA

**Applied Load**  
DL (kN)  
LL (kN)  
WL Up (kN)  
WL Dn (kN)

Span: <b>3925</b>	Floor Material: <b>Particle (15.4 kg/m<sup>2</sup>)</b>	Application: <b>General Areas</b>	All dimensions in millimetres. This drawing should be read in conjunction with Multinail Technical sheets. Wall plates must be placed at supports only.	<b>016020</b> (TN-016-020)
Overhang: <b>0/0</b>	Floor Covering: <b>Std Carpet + Underlay (8 kg/m<sup>2</sup>)</b>	Live Load: <b>1.5 kPa</b>		Ver: <b>Floor 1.9.4</b>
Spacing: <b>600</b>	Ceiling Material: <b>Plaster 10mm Supa Span (8.2 kg/m<sup>2</sup>)</b>	Point Load: <b>1.8 kN</b>		Date: <b>7/12/2018</b>
Quantity: <b>2</b>	Ceiling Fixing: <b>Metal direct @ 600c</b>	Design: <b>AS 1720.1-2010</b>		Page: <b>18 of 24</b>

Client: <b>D'ANDREA</b>	<b>Trusstech SA Pty Ltd</b> 16 High St., Dry Creek, SA 5094  Joist Name: FJ13    Type: SJ 355 Joists: FJ24, FJ26	Job No: <b>TT02366</b>
Site: <b>50-52 WINDSOR ST MAGILL SA 5072 AUS</b>		Weight: <b>6.24 kg</b>
Ref: <b>DWLG 7</b>		Total Weight: <b>12.48 kg</b> Laminations: <b>1</b>



#### TIMBER / PLATES


Member	Size	Plating	Restraint
BC1	90x35-MGP10 H0 ADS	JD5	600
LEW1	90x35-MGP10 H0 ADS	JD5	
TC1	90x35-MGP10 H0 ADS	JD5	300
W1	90x35-MGP10 H0 ADS	JD5	
W2	90x35-MGP10 H0 ADS	JD5	
W3	90x35-MGP10 H0 ADS	JD5	
REW1	90x35-MGP10 H0 ADS	JD5	
RBlock1	90x45-MGP10 H0 ADS	JD5	

#### Vertical Reactions at Supports

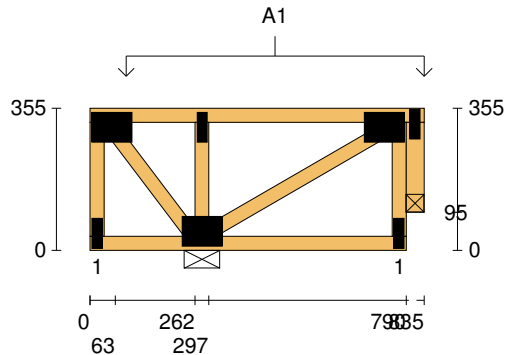
	S1	S2
1.35DL (kN)	0.31	0.13
1.2DL + 1.5LL (kN)	1.05	0.44


#### Joint Nail Plate

T1	75x100-MN
BL1	25x75-MN
B1	75x100-MN
T2	25x75-MN
BR1	25x75-MN
T3	75x100-MN
T3-1	25x75-MN

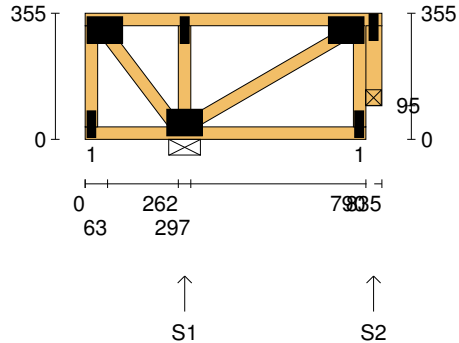
Span: <b>835</b>	Floor Material: <b>Particle (15.4 kg/m²)</b>	Application: <b>General Areas</b>	All dimensions in millimetres. This drawing should be read in conjunction with Multinail Technical sheets. Wall plates must be placed at supports only.	<b>016020</b> (TN-016-020)
Overhang: <b>0/0</b>	Floor Covering: <b>Std Carpet + Underlay (8 kg/m²)</b>	Live Load: <b>1.5 kPa</b>		Ver: <b>Floor 1.9.4</b>
Spacing: <b>600</b>	Ceiling Material: <b>Plaster 10mm Supa Span (8.2 kg/m²)</b>	Point Load: <b>1.8 kN</b>		Date: <b>7/12/2018</b>
Quantity: <b>2</b>	Ceiling Fixing: <b>Metal direct @ 600c</b>	Design: <b>AS 1720.1-2010</b>		Page: <b>19 of 24</b>

Client: <b>D'ANDREA</b>	<b>Trusstech SA Pty Ltd</b> 16 High St., Dry Creek, SA 5094  Joist Name: FJ13    Type: SJ 355 Joists: FJ24, FJ26	Job No: <b>TT02366</b>
Site: <b>50-52 WINDSOR ST MAGILL SA 5072 AUS</b>		Weight: <b>6.24 kg</b>
Ref: <b>DWLG 7</b>		Total Weight: <b>12.48 kg</b> Laminations: <b>1</b>



<b>User Def. Load</b>		A1 53.00 kg/m <sup>2</sup> WET AREA			
<b>Applied Load</b>		DL        (kN) LL        (kN) WL Up    (kN) WL Dn    (kN)			
Span:	835	Floor Material:	Particle (15.4 kg/m <sup>2</sup> )	Application:	General Areas
Overhang:	0/0	Floor Covering:	Std Carpet + Underlay (8 kg/m <sup>2</sup> )	Live Load:	1.5 kPa
Spacing:	600	Ceiling Material:	Plaster 10mm Supa Span (8.2 kg/m <sup>2</sup> )	Point Load:	1.8 kN
Quantity:	2	Ceiling Fixing:	Metal direct @ 600c	Design:	AS 1720.1-2010
All dimensions in millimetres. This drawing should be read in conjunction with Multinail Technical sheets. Wall plates must be placed at supports only.					
					016020 (TN-016-020)
					Ver: Floor 1.9.4
					Date: 7/12/2018
					Page: 20 of 24

Client: <b>D'ANDREA</b>	<b>Trusstech SA Pty Ltd</b> 16 High St., Dry Creek, SA 5094  Joist Name: FJ14 Type: SJ 355 Joists: FJ25	Job No: <b>TT02366</b>
Site: <b>50-52 WINDSOR ST MAGILL SA 5072 AUS</b>		Weight: <b>6.24 kg</b>
Ref: <b>DWLG 7</b>		Total Weight: <b>6.24 kg</b>
		Laminations: <b>1</b>



#### TIMBER / PLATES


Member	Size	Plating	Restraint
BC1	90x35-MGP10 H0 ADS	JD5	600
LEW1	90x35-MGP10 H0 ADS	JD5	
TC1	90x35-MGP10 H0 ADS	JD5	300
W1	90x35-MGP10 H0 ADS	JD5	
W2	90x35-MGP10 H0 ADS	JD5	
W3	90x35-MGP10 H0 ADS	JD5	
REW1	90x35-MGP10 H0 ADS	JD5	
RBlock1	90x45-MGP10 H0 ADS	JD5	

#### Vertical Reactions at Supports

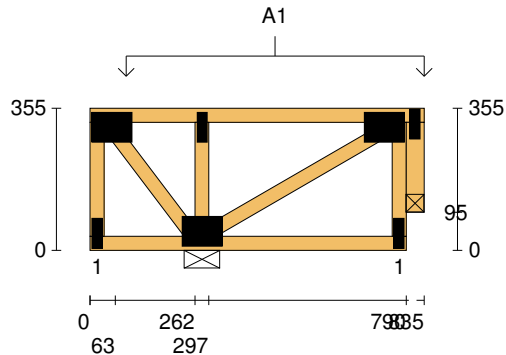
	S1	S2
1.35DL (kN)	0.31	0.13
1.2DL + 1.5LL (kN)	1.05	0.44


#### Joint Nail Plate

T1	75x100-MN
BL1	25x75-MN
B1	75x100-MN
T2	25x75-MN
BR1	25x75-MN
T3	75x100-MN
T3-1	25x75-MN

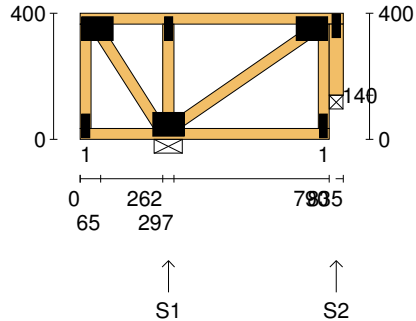
Span: <b>835</b>	Floor Material: <b>Particle (15.4 kg/m²)</b>	Application: <b>General Areas</b>	All dimensions in millimetres. This drawing should be read in conjunction with Multinail Technical sheets. Wall plates must be placed at supports only.	<b>016020</b> (TN-016-020)
Overhang: <b>0/0</b>	Floor Covering: <b>Std Carpet + Underlay (8 kg/m²)</b>	Live Load: <b>1.5 kPa</b>		Ver: <b>Floor 1.9.4</b>
Spacing: <b>600</b>	Ceiling Material: <b>Plaster 10mm Supa Span (8.2 kg/m²)</b>	Point Load: <b>1.8 kN</b>		Date: <b>7/12/2018</b>
Quantity: <b>1</b>	Ceiling Fixing: <b>Metal direct @ 600c</b>	Design: <b>AS 1720.1-2010</b>		Page: <b>21 of 24</b>

Client: <b>D'ANDREA</b>	<b>Trusstech SA Pty Ltd</b> 16 High St., Dry Creek, SA 5094  Joist Name: FJ14    Type: SJ 355 Joists: FJ25	Job No: <b>TT02366</b>
Site: <b>50-52 WINDSOR ST MAGILL SA 5072 AUS</b>		Weight: <b>6.24 kg</b>
Ref: <b>DWLG 7</b>		Total Weight: <b>6.24 kg</b> Laminations: <b>1</b>



<b>User Def. Load</b>		A1 53.00 kg/m <sup>2</sup> WET AREA			
<b>Applied Load</b>		DL        (kN) LL        (kN) WL Up    (kN) WL Dn    (kN)			
Span:	835	Floor Material:	Particle (15.4 kg/m <sup>2</sup> )	Application:	General Areas
Overhang:	0/0	Floor Covering:	Std Carpet + Underlay (8 kg/m <sup>2</sup> )	Live Load:	1.5 kPa
Spacing:	600	Ceiling Material:	Plaster 10mm Supa Span (8.2 kg/m <sup>2</sup> )	Point Load:	1.8 kN
Quantity:	1	Ceiling Fixing:	Metal direct @ 600c	Design:	AS 1720.1-2010
All dimensions in millimetres. This drawing should be read in conjunction with Multinail Technical sheets. Wall plates must be placed at supports only.					
					016020 (TN-016-020)
					Ver: Floor 1.9.4
					Date: 7/12/2018
					Page: 22 of 24

Client: <b>D'ANDREA</b>	<b>Trusstech SA Pty Ltd</b> 16 High St., Dry Creek, SA 5094	Job No: <b>TT02366</b>
Site: <b>50-52 WINDSOR ST MAGILL SA 5072 AUS</b>		Weight: <b>6.55 kg</b>
Ref: <b>DWLG 7</b>	Joist Name: FJ15 Type: SJ 400 Joists: FJ27	Total Weight: <b>6.55 kg</b>
		Laminations: <b>1</b>



#### TIMBER / PLATES


Member	Size	Plating	Restraint
BC1	90x35-MGP10 H0 ADS	JD5	600
LEW1	90x35-MGP10 H0 ADS	JD5	
TC1	90x35-MGP10 H0 ADS	JD5	300
W1	90x35-MGP10 H0 ADS	JD5	
W2	90x35-MGP10 H0 ADS	JD5	
W3	90x35-MGP10 H0 ADS	JD5	
REW1	90x35-MGP10 H0 ADS	JD5	
RBlock1	90x45-MGP10 H0 ADS	JD5	

#### Vertical Reactions at Supports

	S1	S2
1.35DL (kN)	0.32	0.13
1.2DL + 1.5LL (kN)	1.06	0.44

#### Joint Nail Plate

T1	75x100-MN
BL1	25x75-MN
B1	75x100-MN
T2	25x75-MN
BR1	25x75-MN
T3	75x100-MN
T3-1	25x75-MN

Span: <b>835</b>	Floor Material: <b>Particle (15.4 kg/m²)</b>	Application: <b>General Areas</b>	All dimensions in millimetres. This drawing should be read in conjunction with Multinail Technical sheets. Wall plates must be placed at supports only.	<b>016020</b> (TN-016-020)
Overhang: <b>0/0</b>	Floor Covering: <b>Std Carpet + Underlay (8 kg/m²)</b>	Live Load: <b>1.5 kPa</b>		Ver: <b>Floor 1.9.4</b>
Spacing: <b>600</b>	Ceiling Material: <b>Plaster 10mm Supa Span (8.2 kg/m²)</b>	Point Load: <b>1.8 kN</b>		Date: <b>7/12/2018</b>
Quantity: <b>1</b>	Ceiling Fixing: <b>Metal direct @ 600c</b>	Design: <b>AS 1720.1-2010</b>		Page: <b>23 of 24</b>

